



CMG GardenNotes #414

## Work Sheet: Water Wise Landscape Design

---

**Exercise 1** – Write down word phrases that describe what landscape design involves.

**Exercise 2** – For each picture, write a story line (theme), and then list three things that would go in the landscape for the theme.

**Picture 1**

Theme

- 1.
- 2.
- 3.

**Picture 2**

Theme

- 1.
- 2.
- 3.

**Picture 3**

Theme

- 1.
- 2.
- 3.

**Exercise 3** – For the Smith family,

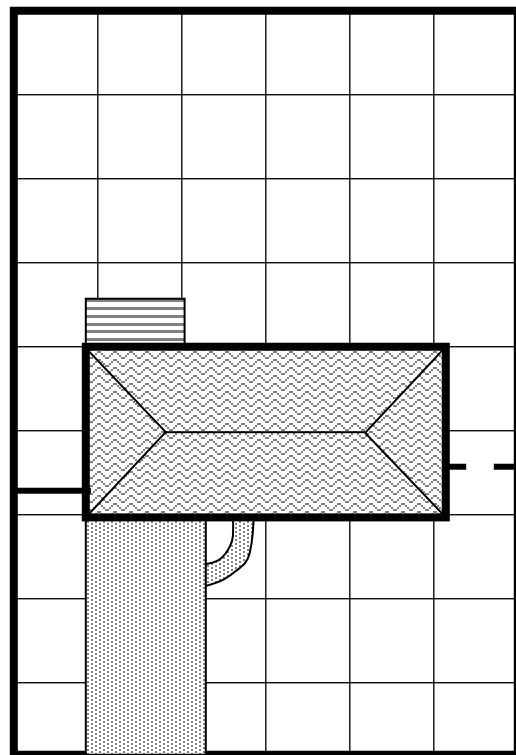
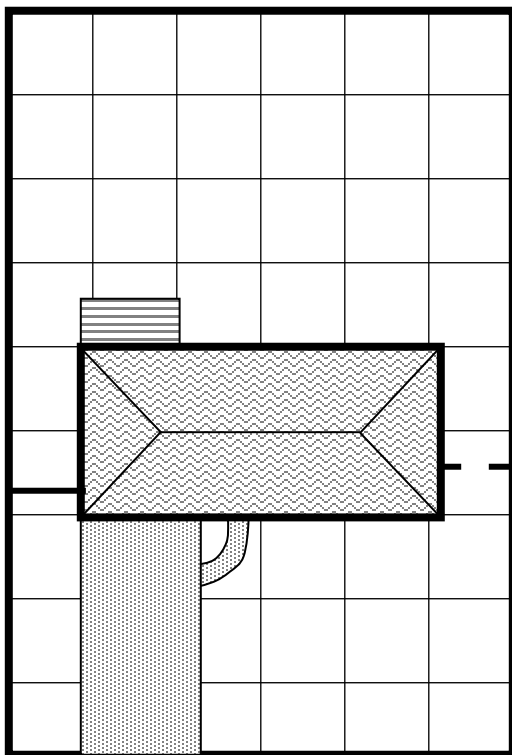
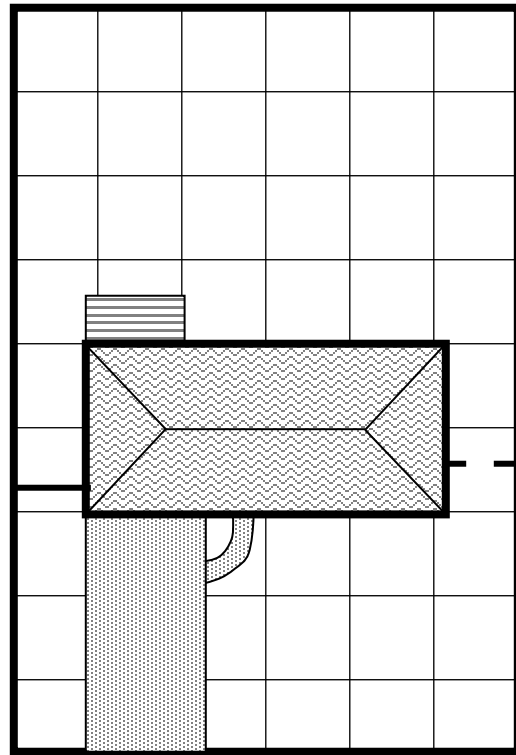
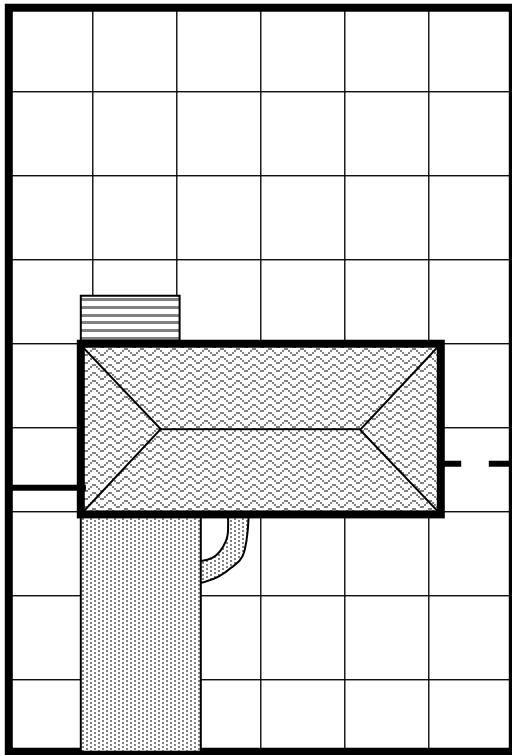
1. Select three important elements in their landscape

- 1.
- 2.
- 3.

2. Write a story line (theme) that communicates how the landscape connects to them.

**Exercise 4** – Develop distinctly different hydrozone bubble drawing for the Smith family based on the theme for Exercise 3. Identify irrigation needs in each bubble.

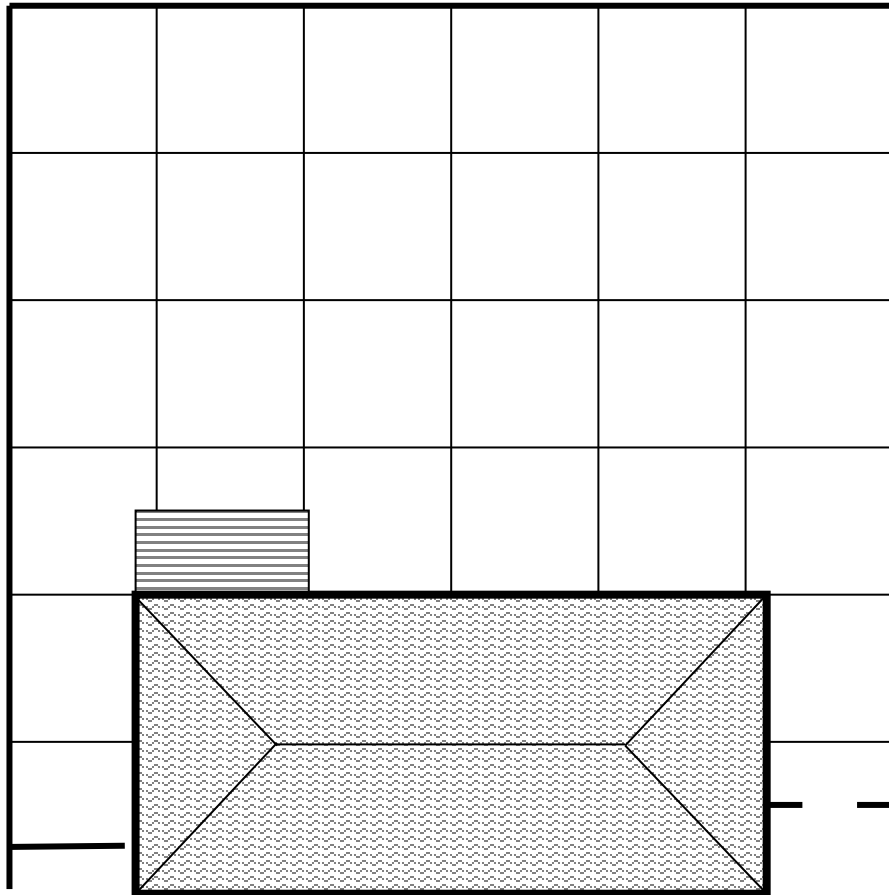
Note the yard is 90 feet wide and 135 feet deep (each line is 15 feet)



**Exercise 5**

Based on a bubble drawing from Exercise #6, continue to define the space use in the backyard in an angular, curvilinear, or rectilinear design.

Note: The back yard is 90 feet by 60 feet (each line is 15 feet)



**Exercise 6** – For each color, list three words that describe your feelings and emotions related to the color.

**Red**

- 1.
- 2.
- 3.

**Yellow**

- 1.
- 2.
- 3.

**Blue**

- 1.
- 2.
- 3.

**Green**

- 1.
- 2.
- 3.

**Orange**

- 1.
- 2.
- 3.

**Purple**

- 1.
- 2.
- 3.

**White**

- 1.
- 2.
- 3.

**Pink**

- 1.
- 2.
- 3.